



FurnFold

Folding cabinet/Wardrobe door system



Suitable for doors up to 15kg (30kg for two panels).



Featuring runners
Highest quality components



Full technical support



Inframe and overlay doors



Easy to fit and adjustable

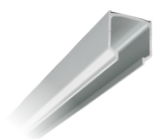


Door thickness: 16-30mm

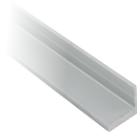
Furnfold bi-folding door track system for cabinet/wardrobe doors remains one of the most popular sellers in our range.

The Furnfold is the ideal lightweight bi-folding option for cabinet or wardrobe doors.

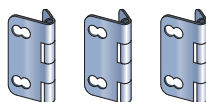
FurnFold Components



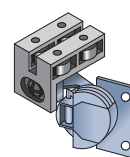
Aluminium top track



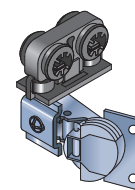
Aluminium lower profile



Hinges



Lower guide



Top roller

A) Fitting kit for 2 x doors left or 2 x doors right includes: 1 x top hinge roller and 3 x hinges

B) Fitting kit for 4 doors 2 x doors left + 2 x doors right includes: 2 x top hinge roller and 6 x hinges

	Description	Code
1.2 Metre Track	1.2 Metre top track, fitting kit for 2 x doors left or 2 x doors right ^A and lower track to suit	FF1200BT-2
	1.2 Metre top track, fitting kit for 2 x doors left + 2 x doors right ^B and lower track to suit	FF1200BT-4
	1.2 Metre top track and fitting kit for 2 x doors left or 2 x doors right ^A	FF1200-2
	1.2 Metre top track and fitting kit for 2 x doors left + 2 x doors right ^B	FF1200-4
2.4 Metre Track	2.4 Metre top track, fitting kit for 2 x doors left or 2 x doors right ^A and lower track to suit	FF2400BT-2
	2.4 Metre top track, fitting kit for 2 x doors left + 2 x doors right ^B and lower track to suit	FF2400BT-4
	2.4 Metre top track and fitting kit for 2 x doors left or 2 x doors right ^A	FF2400-2
	2.4 Metre top track and fitting kit for 2 x doors left + 2 x doors right ^B	FF2400-4
3.6 Metre Track	3.6 Metre top track, fitting kit for 2 x doors left or 2 x doors right ^A and lower track to suit	FF3600BT-2
	3.6 Metre top track, fitting kit for 2 x doors left + 2 x doors right ^B and lower track to suit	FF3600BT-4
	3.6 Metre top track and fitting kit for 2 x doors left or 2 x doors right ^A	FF3600-2
	3.6 Metre top track and fitting kit for 2 x doors left + 2 x doors right ^B	FF3600-4



Specification

- Door thickness: 16mm - 30mm
- Suitable panel widths: Up to 500mm
- For inset and overlay applications
- Maximum of 2 doors folding each side

