



ProSlide 18

Wardrobe sliding door system



Maximum door panel weight of 50kg.



Featuring high quality components



Full technical support



Hassle free door solution



Adjustable sliding solution



Suitable for inset doors



Frame sliding system



Soft close

2 Year
warranty



Easy to fit and suitable for interior applications

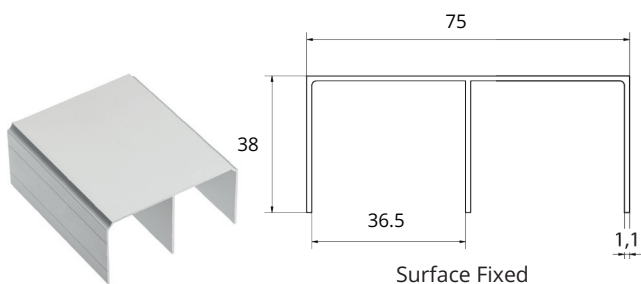
ProSlide 18 is a complete sliding door system including tracks, fittings and aluminium profiles designed for 18mm centre panels.

This system is bottom rolling and guided at the top, which is perfect where large light weight doors are required.

The ProSlide 18 is a double track, bypassing system enabling multiple doors to slide past each other.



ProSlide 18 Components



(A) 3 Metre top track

Code: 500-101-3



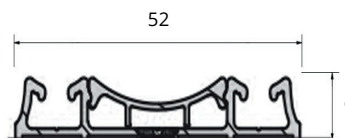
(B) 3 Metre bottom track

Code: 500-109-3



(C) 3 Metre bottom track masking frame cover cap

Code: 500-110-3

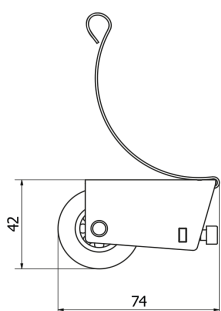


Surface fixed



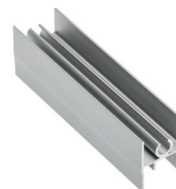
(D) Bottom roller

Code: 500-202



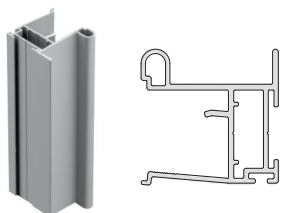
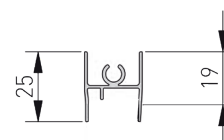
(E) Top roller

Code: 500-201



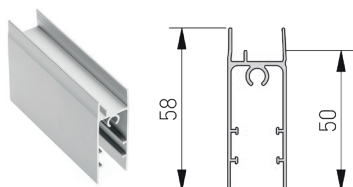
(F) 3 Metre top frame/roller housing profile

Code: 500-321



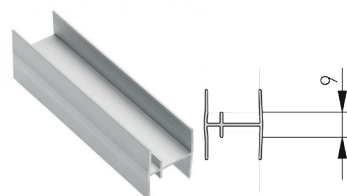
(G) 2.7 Metre side handle housing profile

Code: 500-418



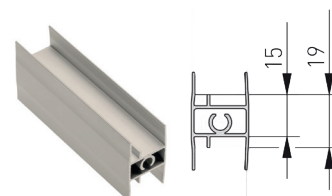
(H) 3 Metre bottom frame/roller housing

Code: 500-320



(I) 3 Metre middle panel connector

Code: 500-419



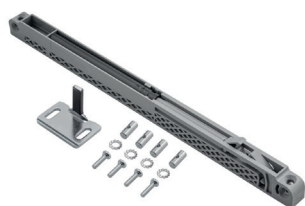
(J) 3 Metre bolt-on middle panel connector

Code: 500-319



(M) Fitting bolts

Code: 500-203



(N) Soft open & close

Code: 500-204



Drilling tool

Code: 500-208

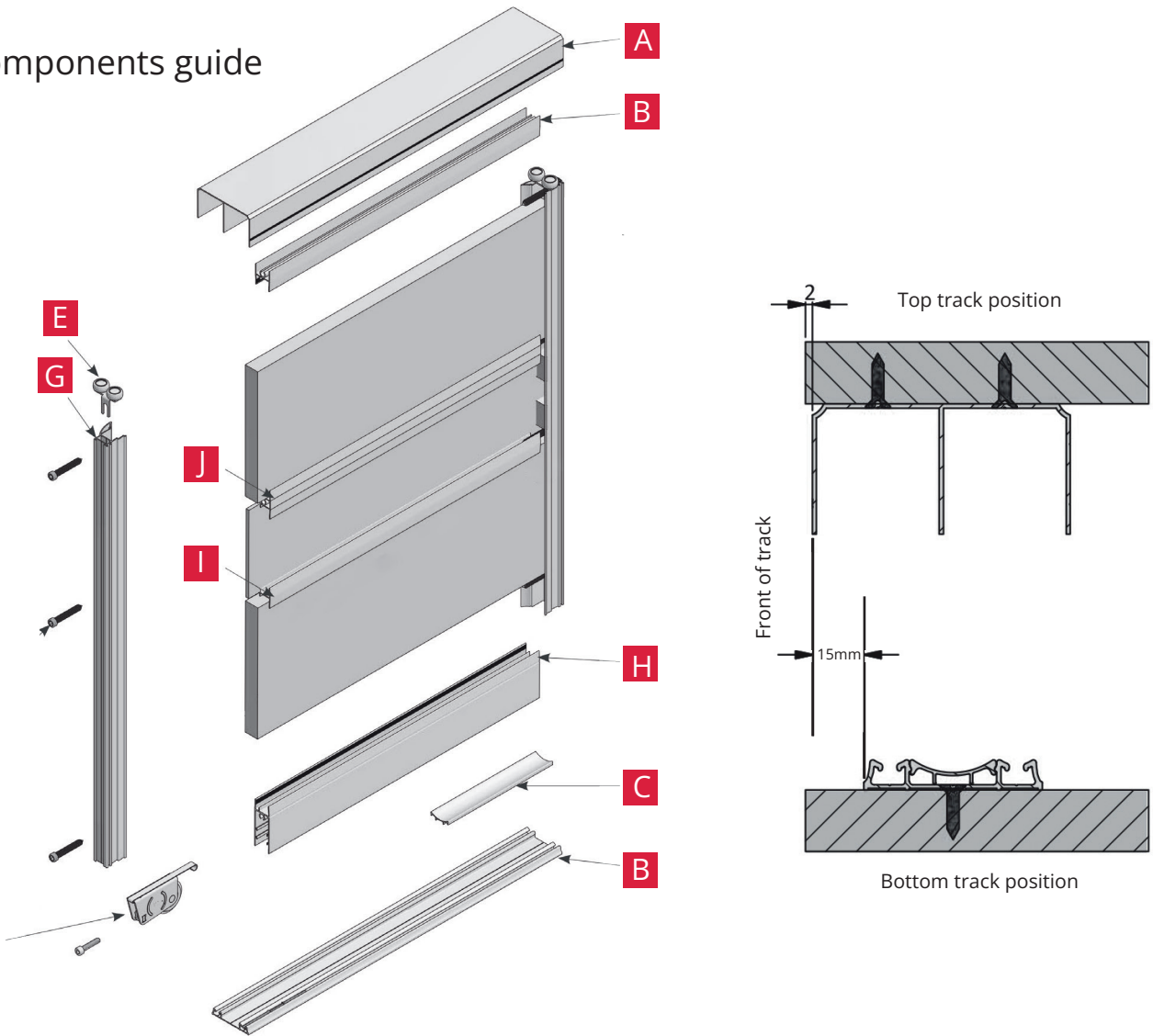


Two-step drill bit

Code: 500-207

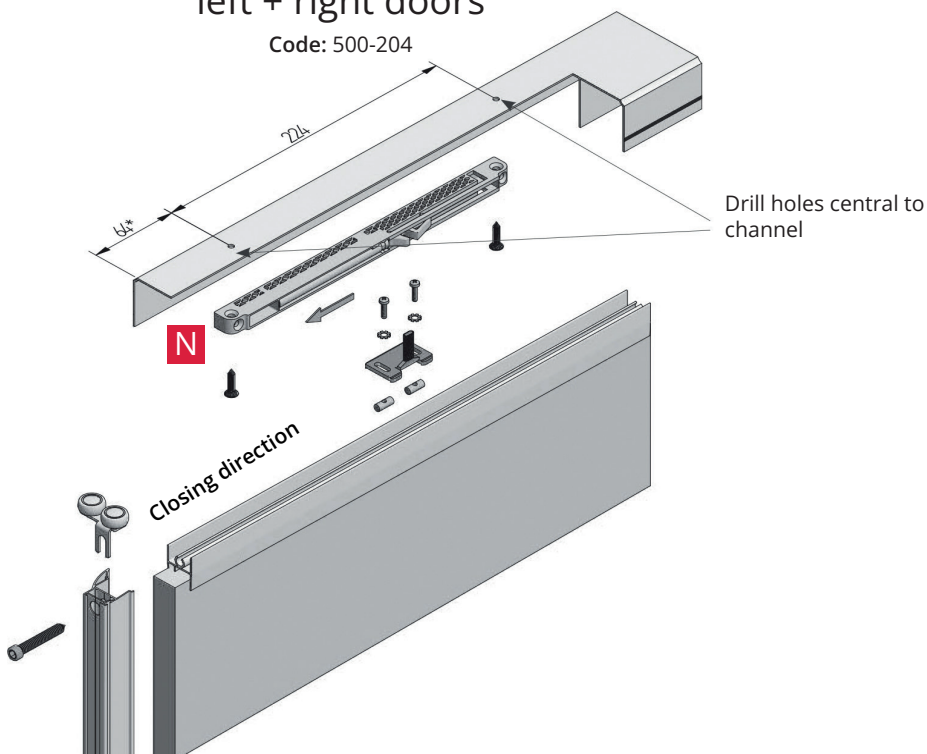
ProSlide 18 Specifications

Components guide



Soft open and closer for left + right doors

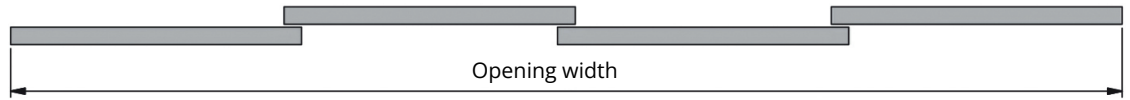
Code: 500-204



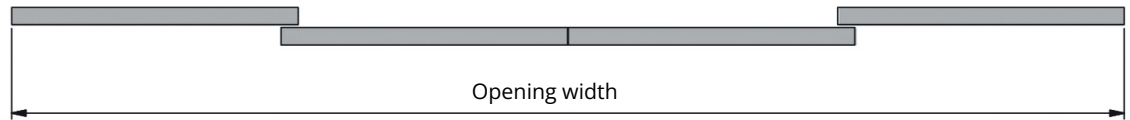
ProSlide 18 Configurations

Door configurations

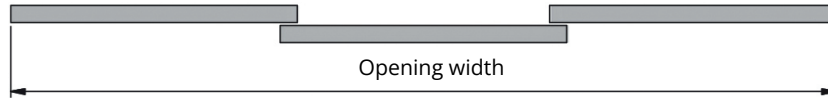
4 Door
3 Overlaps



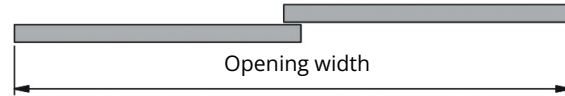
4 Door
2 Overlaps



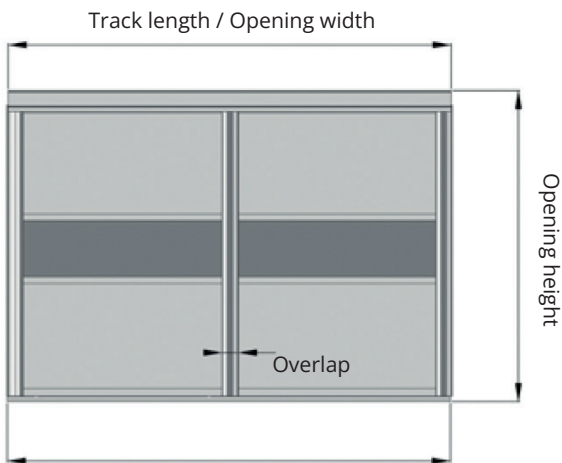
3 Door
2 Overlaps



2 Door
1 Overlap



Calculations



Track length = Opening width
 Door height = Opening height - 50mm
 Overlap width = 30mm

Profile size calculations

Top door profile = Door width - 55mm

Horizontal centre rail = Door width - 55mm

Lower door profile = Door width - 55mm

Handle height = Door height

Infill panel dimensions

Panel size = door width - 31mm x door height - 69mm

Where 2 or more infill panels are being used reduce height by 1mm - 2mm for every horizontal middle panel connector rail used.

When using the horizontal bolt-on middle panel connector rail the dimensions of the connector rail must be taken into account.